





# 100 Years Young!

*Whoo-Hoo!*













# THE BRITISH INVASION



Trivia  
August 25th





# 25th Anniversary Program

## February 24, 2002

Look  
At Us  
Now!!!



LOOK AT US NOW!!!



ST. GILES PRESBYTERIAN CHURCH  
116 Foxridge Road  
Orange Park, FL 32065  
Tel: (904) 272-1244  
Pastor's e-mail address: [pastor@stgilesfl.org](mailto:pastor@stgilesfl.org)  
Office e-mail address: [info@stgilesfl.org](mailto:info@stgilesfl.org)

### 25TH ANNIVERSARY PROGRAM FEBRUARY 24, 2002

INTRODUCTION BY TROY

PRAYER

RECOGNITION OF GUESTS

DINNER WITH MUSIC BY RUTH CALDWELL

PROGRAM

SLIDE PRESENTATION BY LONG RANGE PLANNING COMMITTEE

#### In the Beginning

Eileen Falls  
Horace Covington  
Claire Pearson

#### First Sanctuary

Brenda Cohn  
Mary Hammett  
Songs by the Wild Ones

#### Education Building

Liz Holton  
Carter Chestnut  
The Children's Center

#### Current Sanctuary

Jerry Dorsch  
Tim Wilson

## OUR HISTORY

### St. Giles is making history!



We've been at it now for 20 years.

Our story began in 1973 when the Orange Park Presbyterian Church set a goal of establishing a new church. Two years later the Blanding Boulevard Site was purchased by the Presbytery and on February 17, 1976 the first organizational meeting was held at Doctor's Inlet Civic Center.

The first worship service of the new congregation was conducted at Peoria Chapel on February 29, 1976. Three months later we had a membership of 23 and after three more months our rolls had grown to 38.

In October 1976 the Rev. J. Reid Cameron was called as Associate Pastor of the Orange Park Presbyterian Church with the sole duty of serving as the organizing pastor of the new church.

St. Giles was officially chartered with 55 members on February 26, 1977 for the St. Giles Cathedral in Edinburgh, Scotland. The original St. Giles Protestant Church in Scotland and was pastored by John Knox, one of the founders of the Presbyterian Church.

The first building at our present location was erected in 1977. This building was used as fellowship hall, church offices, nursery, and classrooms. In 1988 the new building was completed and in May 1988 the congregation moved into the new building. After Reid Cameron, the church was led by the Rev. Cam Harkness. After Cam Harkness, the Rev. J. Roy Sharpe began his work here in September 1991. What we've done is only a part of our history. It's the part we can't see. What we're doing now is the part we can see. It's the part we can write.

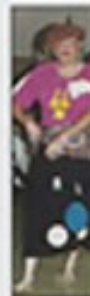
## LIFE AT ST. GILES



We enjoy fun, food, and fellowship at one of our many opportunities to gather with our church family.



Our times together are fun times!



Our regular Sunday fellowship is prepared!



# 25th Anniversary February 24, 2002